
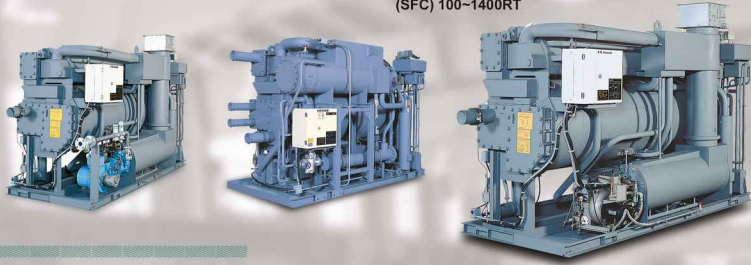


**Absorption Chillers**

Under Licence of  
 Kawasaki Thermal Engineering Co., Ltd. (Japan)

- ▶ Direct-Fired Absorption Chillers (DFC) 40~1100RT (Gas,Oil)
- ▶ Steam-Fired Absorption Chillers (SFC) 100~1400RT



**Air Handling & Air Washer Units**



- ▶ Model: AHU& AW Range: 2000~65000CFM & any customized models



**Liquid Chillers**

- ▶ Remote Air Cooled Liquid Chillers Range: 5~560RT



- ▶ Water Cooled Liquid Chiller Range of 5~560RT



- ▶ Compact Air Cooled Liquid Chillers Range: 5~560RT



این قسمت را با پارکینگ خودتان پر کنید

---



---



---



---



---



**MEHRASL**  
 MANUFACTURING CORPORATION

HEAD OFFICE: No. 17 - ZOHREH St. - MOFATTEH Ave  
 TEHRAN 15-888-36981 IRAN  
 TEL: (0098-21) 88300801 FAX: (0098-21) 88304147  
 FACTORY: SALIMI Industrial Zone - TABRIZ - IRAN  
 TEL: (0098-41) 34328941-50 FAX: (0098-41) 34328955

دفتر مرکزی: تهران، آدرس: خیابان زهرا، پلاک ۱۷، منطقه ۱۵، تهران ۱۵۸۸۸۳۶۹۸۱  
 شماره تلفن: ۰۲۱-۸۸۳۰۰۸۰۱ فکس: ۰۲۱-۸۸۳۰۴۱۴۷  
 کارخانه: تبریز - منطقه صنعتی سالیمی  
 شماره تلفن: ۰۴۱-۳۴۳۲۸۹۴۱-۵۰ فکس: ۰۴۱-۳۴۳۲۸۹۵۵

Email: headoffice@mehrasl.com http://www.mehrasl.ir

**MEHRASL**  
 MANUFACTURING CORPORATION  
 General Catalogue 2015





**MA Flex Closed Cell Elastomeric Insulation**



- MA Flex TK Tubes: TA(1/4"-2 5/8")xID(1/4"-3/4")
- MA Flex TK Sheet Rolls: 1/8"-1 1/4"(single x Double side Smooth)
- MA Flex TK Sheet Rolls with Adhesive: 3/8"-1 1/4"

**Copper Tubes & Copper Fittings**

- Production Range of Level Wound Coil (LWC): OD(3mm-19.05mm) x WT (0.30-1.50mm)
- Production Range of Straight Length Tubes: OD(4mm-79.37mm) x WT (0.30-2.03mm)
- Production Range of Pancake Coil: OD(4mm-25mm) x WT(0.30-1.50mm)
- Inner Grooved Tubes: 3/8", 1/2" & 5/8"
- Low Finned Tubes: 1/2", 5/8" & 3/4"
- Enhanced Finned Tubes: 1/2", 5/8" & 3/4"

**Copper Fittings**

- Equal Tee, Equal Coupler, Reducer, Elbow 45°
- Elbow 90°, U bend and Trap.



**Special Orders**



Mobile Pakaged Unit for Airplane 60~160RT

Mold Chillers (5 - 10 & 15 RT)

**Fan Coil**



Ceiling model: FCH\* Range: 200 to 1200CFM

Fantasy model: FCF\* Range: 200 to 1200CFM

Luxury Type Model: FCW Range: 200 to 1000 CFM

**Window Type A/C**

18000 & 24000 BTU/Hr



Ducted Split (28000 to 90000 BTU/Hr) With hot water coil



**Split Units**

Floor standing (48000 BTU/Hr)



استاندارد ایران نشانه مرغوبیت کلاس است

**Precision Air Cooled Package Units**

Unit Range of 5-30RT



**Unit Condensers & Unit Coolers**



**Package Unit**

Air Cooled Package Unit (APC Type) Range: 4 to 100 RT



Remote Air Cooled Package Unit (RPC Type) Range: 15 to 100 RT

**Cooling Tower**

Fiber Glass Bodies

Hot Deep Galvanized Steel



10 to 600 RT

90 to 500 RT

20 to 1140 RT